

1. Discovering Vasari

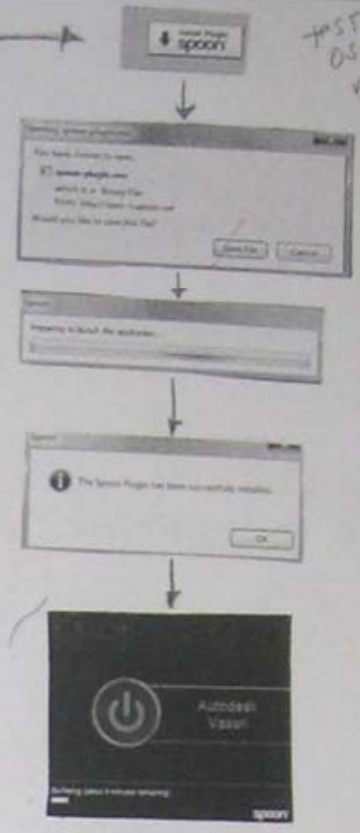
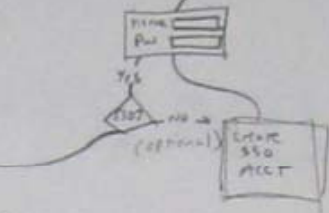
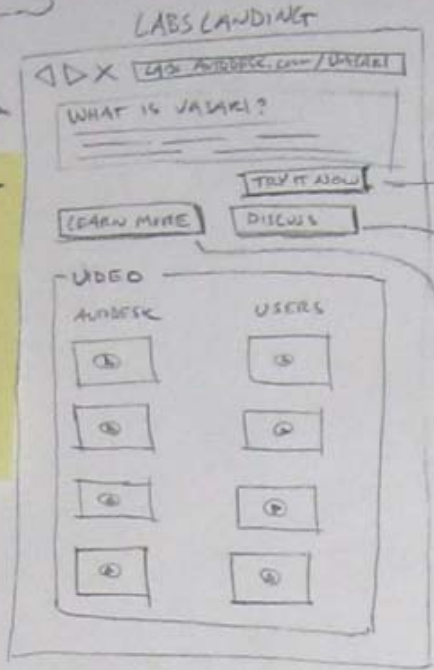
- Gabriel reads about a new free tool from Autodesk
- He navigates to the Vasari landing page
- He clicks on "Run Now" - he is given the option to create a single sign-on account or just start the application
- Vasari starts to run after Gabriel installs the spoon plugin

EMAIL
BLOGS
FACEBOOK

STORIES

- Find out more about Vasari (landing page)
- Find out how to use Vasari (video)
- Launch Vasari (spoon)
- Create an account (personal page explaining value of SSO)

SSO →
Analyses?
- when do we gather
- spoon analyses?
- social



FAST different OS's
Diverse

silver

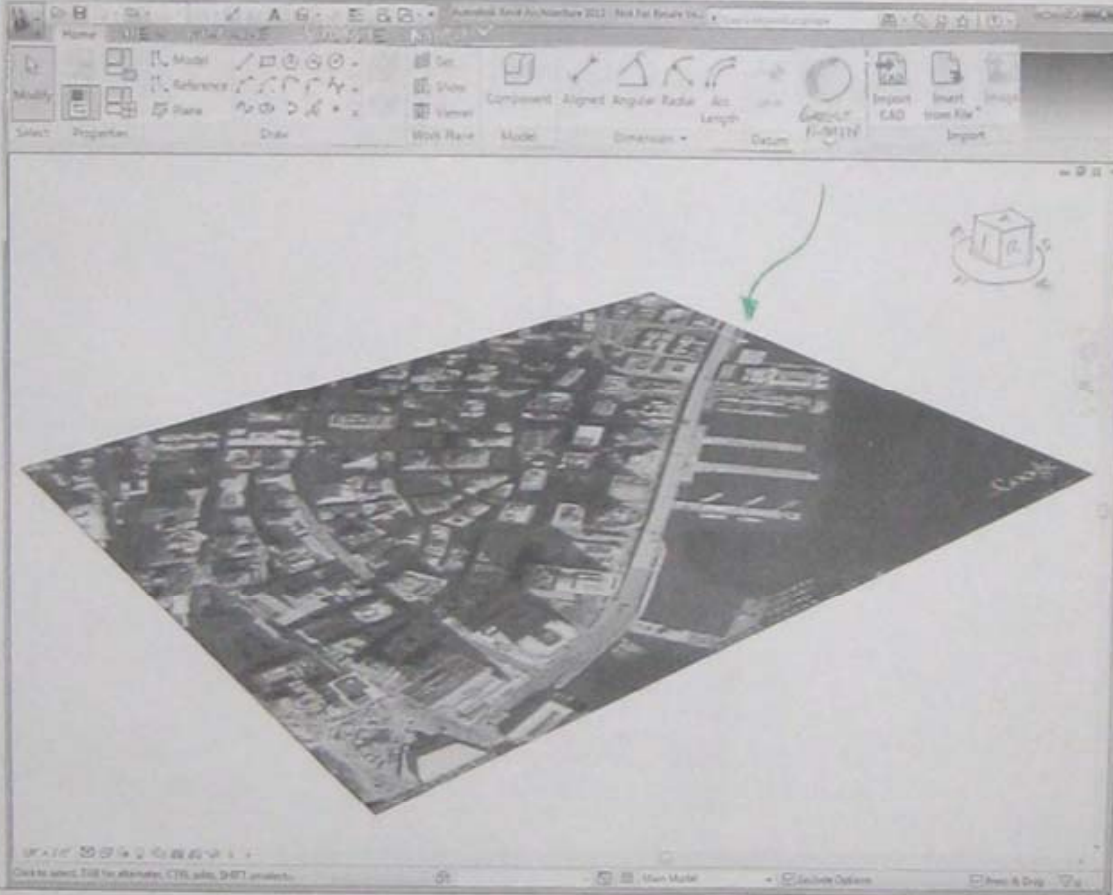
2. Importing the Site

Gabriel imports the site plan DWG of the site plan from his studio project

Gabriel optionally loads the site from Google Earth

STORIES

- recognize slant → draw gallery is always available
- Google earth plugin is on slant - not available yet
- Raster image appears in 3D view



'Blaine'
There?
COST? rooms

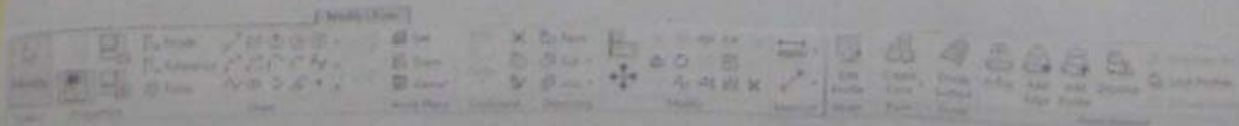
Use
→ new location dialog insert?

ing the Model

... as in-place mass
(improvement: remove
name mass dialog)

Series

- No "name mass" dialog - selecting mass displays name
- No "push/pull" panel - modify or delete command. Another command exists
- sub-panels: undo command pushes the commit out more backwards into mass commands
- Better tool tips with defaults (update display)
- selecting mass opens modify CP - no more edit mass button



selecting an existing mass opens the CP (no edit mass button)

7. Design Options

- Create multiple design options

Design Options

New Editing

110 Water St | Salt Tower

- Existing Building (gray)
- Salt Tower
- Layered Tower
- Box A Tower
- Trapezoid
- Angled Tower

Edit Selection

New Editing

Copy

Paste

Accept Primary

Cancel

New

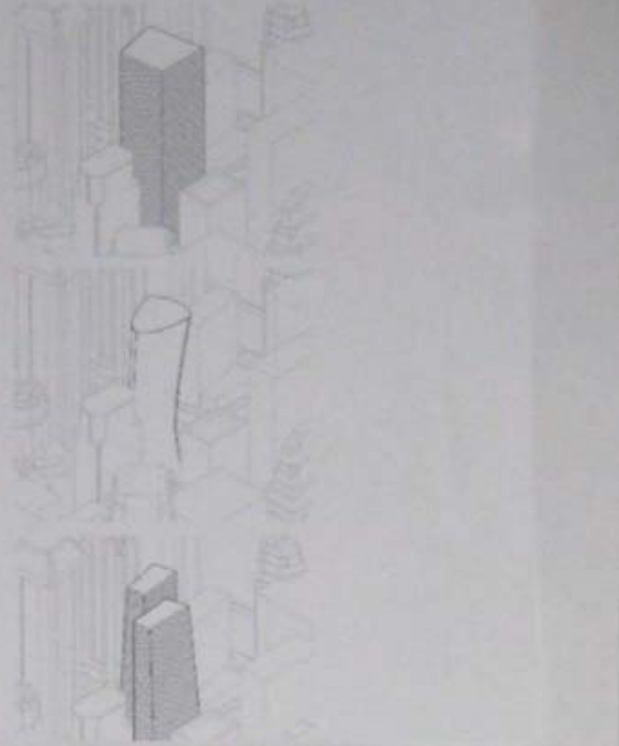
Make Primary

Expand

Collapse

Delete

Close Help



Manage Links

Manage Images

Detail Types

Manage Project

Additional Settings

Location

Design Options

Apply to All

Place to Edit

View Model

Design Options

Sun Settings

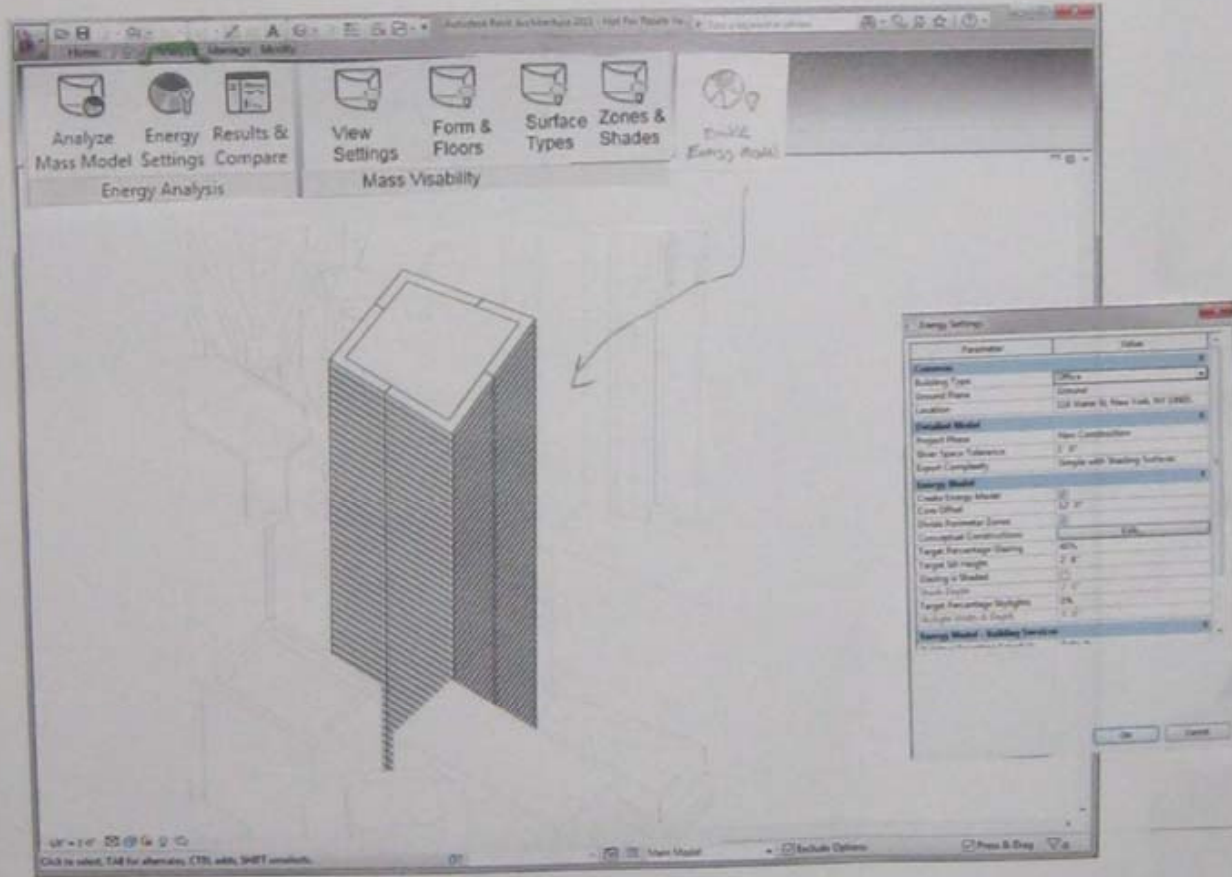
Analysis Display Styles

Autodesk

8. Perform Energy Analysis

• CEA Workflow

- Suggested flow
- new ribbon
- Energy model task button
- new Energy settings dialog
- dashboard improvements



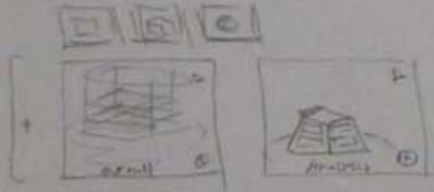
No sign in for Vasari GBS run -

✓ BUILDING

(B) []

✓ BUILDING

Ⓐ SHOWCASE



USER LOCATES SHOWCASE
WANTS TO GO TO LINK

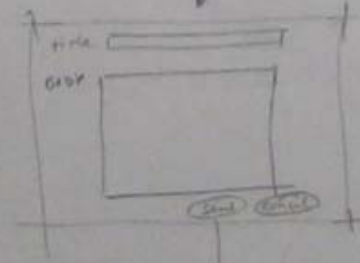
↓
publish to web

Ⓑ

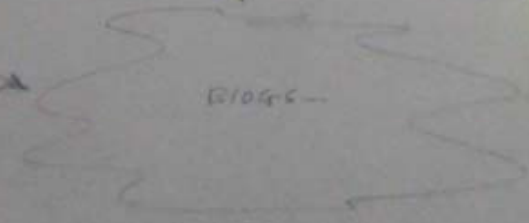
Send to Blog

- ISLOGGIC
- TYPEPAD
- add new...

Register new blog
...



my post - PUT



Send RST -
ISP results